

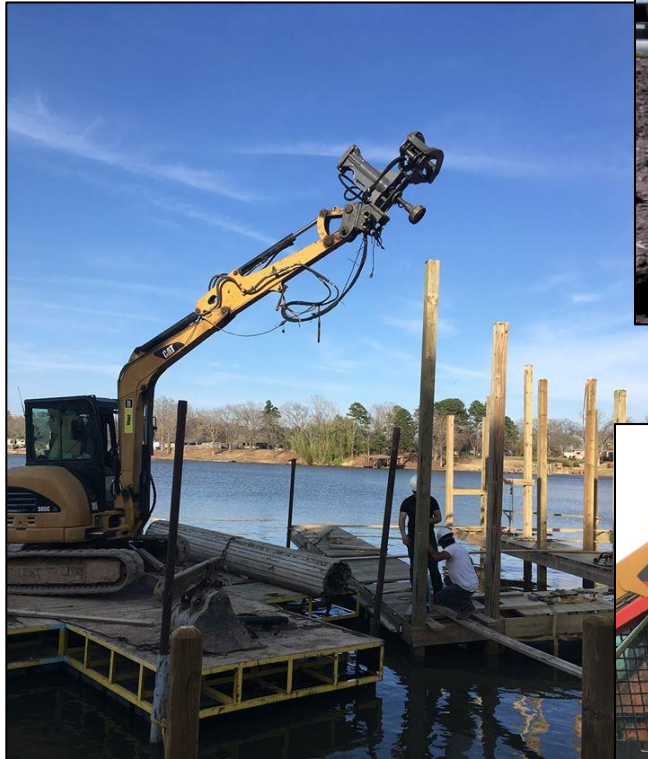
# SOLARIS GRAB-N-DRIVE GD30S POST & PILE DRIVER



*Quality Attachments, Parts & Customer Service*

## Post Driving Made Easy!

- Plug & Play on Most Excavators, Backhoes and Loaders
- Just one operator required to grab, handle and pound
- Light weight, yet tons of power
- Depth & Verticality Gauge
- Tilt Option



# SOLARIS GRAB-N-DRIVE GD30S POST & PILE DRIVER



*Quality Attachments, Parts & Customer Service*

## What Is Included with the Purchase of the Grab-N-Drive?

- blank mounting plate (bolt-on)
- Chain Box & 10ft chain
- Standard post driving tool (tapered cup type)
- Standard chisel
- Standard hoses – 6ft long
- Tool holder for spare tools
- Mounting position for diverter valve
- Powder coated in green/yellow
- Safety decals
- CE Certification



Grab-N-Drive GD30S Post & Pile Driver	
Carrier Weight Range	4.5 to 9 metric ton (10,000 to 20,000 lbs.)
Weight	860 lbs.
Flow Requirements min/max	6.5 - 10 gpm
Operating Pressure	1595 psi
Impact Rate	750 - 1250 bpm
Impact Energy	502 ft/lbf
Noise Level	117 dB
Tool Diameter	2.08 in.

The Grab-n-Drive line has the ability to be operated with one or two auxiliary hydraulic circuits. Machines with one circuit will require a diverter valve and control kit for proper operation. We offer a diverter valve with control Kit (12 volt/ 32 foot cable) if needed.



[www.solarisattachments.com](http://www.solarisattachments.com)

Call (206) 290-0843

Email: [sales@solarisattachments.com](mailto:sales@solarisattachments.com)