

Solaris-Auger Torque's Auger Drives are built to the most exacting standards using only high quality materials and the latest manufacturing techniques available.

FORGED HOOD EARS

Standard with all Auger Drives in areas that we know will take a lot of strain. All hood pins are locked for extra safety making it impossible for the hood to detach from your hitch.

HOSES & ADAPTORS

All Auger Drives come standard with high quality hoses and adaptors (excludes larger units. QRC's not included).

HIGH QUALITY HYDRAULIC MOTORS

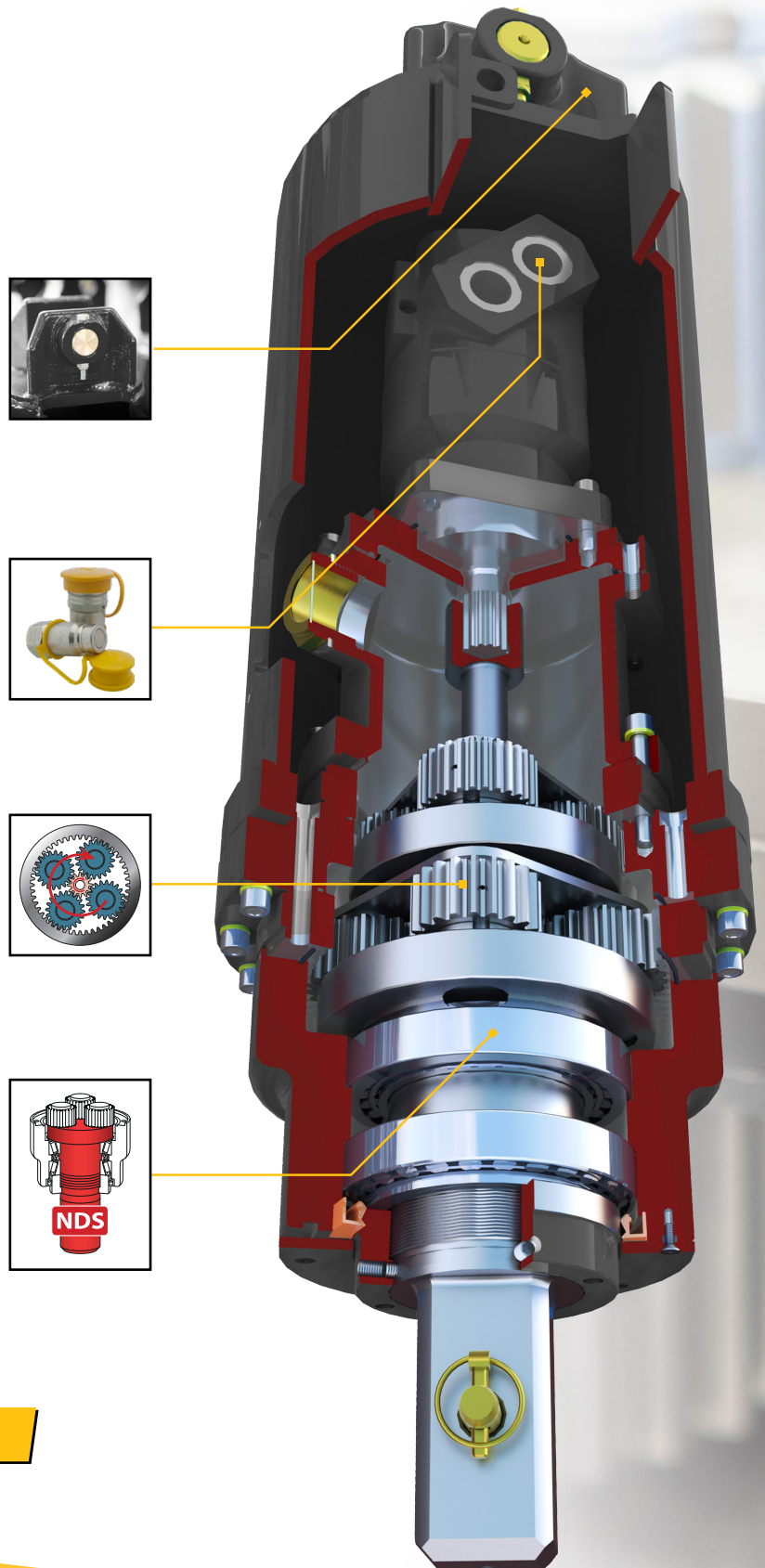
Solaris-Auger Torque's huge buying power means we work closely with high quality suppliers to develop the most reliable attachments available on the market today.

EPICYCLIC GEARBOX

Torque is amplified by using the unique Solaris-Auger Torque planetary gearbox. This system allows the motors output torque to be multiplied with extreme efficiency as well as ensuring the durability and reliability you need.

NON-DISLODEMENT SHAFT

Unique to Solaris-Auger Torque, the Non-Dislodgement Shaft is a single piece drive shaft assembled top down and locked into the Earth Drill housing. This design guarantees that the shaft will never fall out, making for a safer work environment, not only for the operator but also any surrounding workers, a MUST-HAVE FEATURE for any safety conscious company.



Visit us at www.solarisattachments.com

www.solarisattachments.com

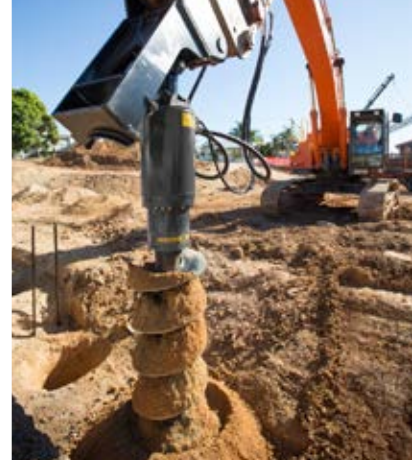
CALL (888) 754-3609 | EMAIL sales@solarisattachments.com



SOLARIS
QUALITY ATTACHMENTS

EARTH DRILL

SERIES 4 & 4.5



SUITABLE FOR 8 - 22 TON EXCAVATORS

The Series 4 & 4.5 Auger Drive range is the perfect choice for 8-22T excavators, and just like all our planetary drives in our line up they are highly engineered and built to last.

HIGH QUALITY HYDRAULIC MOTORS

Solaris-Auger Torque's huge buying power means we work closely with high quality suppliers to develop the most reliable attachments available on the market today.

EPICYCLIC GEARBOX

Torque is amplified by using the unique Solaris-Auger Torque planetary gearbox. This system allows the motors output torque to be multiplied with extreme efficiency as well as ensuring the durability and reliability you need.

FORGED HOOD EARS

Standard with all Auger Drives in areas that we know will take a lot of strain. All hood pins are locked for extra safety making it impossible for the hood to detach from your hitch.

NON-DISLODGE MENT SHAFT

Unique to Solaris-Auger Torque, the Non-Dislodgement Shaft is a single piece drive shaft assembled top down and locked into the Earth Drill housing. This design guarantees that the shaft will never fall out, making for a safer work environment, not only for the operator but also any surrounding workers, a **MUST-HAVE FEATURE** for any safety conscious company.



www.solarisattachments.com

www.solarisattachments.com

CALL (888) 754-3609 | EMAIL sales@solarisattachments.com

EARTH DRILL - SERIES 4 & 4.5

Features

- ▶ Unique Solaris-Auger Torque planetary gearbox offering high efficiency and extreme durability
- ▶ Single piece drive shaft
- ▶ Large main shaft bearings
- ▶ Heavy duty steel construction
- ▶ Compatible with Solaris-Auger Torques range of Alignment and Torque Monitoring products for **accurate earth drilling applications.**
- ▶ Covered by Solaris-Auger Torque's industry leading warranty

Applications

- ▶ Pre-augering
- ▶ Pole and mast installations
- ▶ Rail applications
- ▶ Deep hole applications
- ▶ Well boring

Specifications

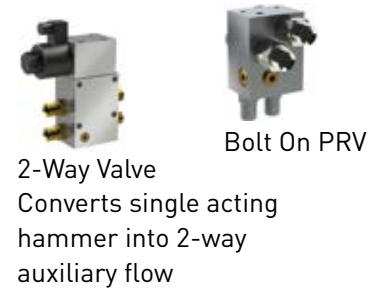
Model		11000-40	11000-45	15000-45	18500-45
Carrier Weight Excavator	t	8-13	10-15	13-20	15-22
Torque Range	ft-lb	2948-8847	3706-11116	9619-14428	12171-18257
Oil Pressure Range	psi	1160-3481	1160-3481	2321-3481	2321-3481
Oil Flow Range	gpm	19-40	21-45	21-45	21-45
Speed Range	rpm	25-54	20-43	16-33	12-26
Unit Height	inch	37	37	45	45
Unit Diameter	inch	12	12	14	14
Unit Weight	lb	379	382	591	593
Output Shaft Std (adaptors available)	inch	2.96 Square	2.96 Square	2.96 Square	2.96 Square
Drilling Performance					
Auger Series		S6	S6	S6	S6
Auger Diameter*	inch	6-48	6-48	6-48	6-60
Drilling Depth*	ft	25-12	25-12	28-15	13-30

*Dependent on ground type

HITCH OPTIONS



EXTRAS



Part of the Solaris Earthmoving range

EARTH DRILLS | AUGERS & WEAR PARTS | MAST-BASED DRILLING RIG | TRENCHERS | HAMMERS

www.solarisattachments.com

CALL (888) 754-3609

EMAIL sales@solarisattachments.com