



SOLARIS
QUALITY ATTACHMENTS

Excavator Buckets, Grapples, & Couplers

2022 Catalog

HIGH-QUALITY EXCAVATOR BUCKETS, GRAPPLES, RAKES & THUMBS

**100% MADE IN THE USA
WITH US STEEL**



Solaris Attachments was established to put you, the equipment & attachment dealer, at the center of what matters to us: Exceptional customer service.

With decades in combined experience in manufacturing & distributing innovative, quality attachments, spare parts, engineering services, machining, and custom design, you can expect to speak with an expert about any of our products or services. We will be there for you far beyond the purchase to help you and your customers with all your attachment needs.

We offer US-made excavator buckets, grapples, rakes & thumbs at great prices and great lead-times, while maintaining top quality manufacturing & production, backed by a 1-year warranty.



SOLARIS
QUALITY ATTACHMENTS

Seattle • Bellingham • Nashville • Boston

(888) 754-3609

sales@solarisattachments.com



Visit our YouTube channel for helpful & informative videos of our product line.

solarisattachments.com

© 2018-2022 Solaris Marketing NW, LLC

Why you should add Solaris to your bucket list.

At Solaris Attachments, we offer you **100% US-Made Buckets, made with North American Steel**. Our buckets are made with pride and care in North Carolina. We offer buckets for the smallest excavator, up to the largest excavators on the planet. We offer three categories of digging buckets:

- **Standard Duty**
- **Heavy Duty**
- **Extreme Duty**

There are hundreds of excavator bucket manufacturers around the world, each advertising that they have the best excavator bucket to offer you. So, how do you make the right choice for an excavator bucket? In short – you get what you pay for. We offer you top quality at a reasonable price. We back up our buckets with a 1-year warranty and the best customer service on the planet. The questions you need to ask yourself before you call us are:

- **What do you need to accomplish with your excavator bucket?**
- **Does your excavator offer the breakout force necessary for the size bucket you want and the load it will carry?**
- **Do you need a digging bucket, ditching bucket or grading bucket? What job does it need to perform?**
- **Finally, what is your budget for an excavator bucket?**

With excavators, one can get a whole lot more creative as far as buckets, grapples and other attachments are concerned, that's why we offer a large variety of different buckets and attachments for all sized excavators, including grading buckets, cable buckets, screening buckets, trapezoidal buckets, and the list goes on...

It's important to remember that each bucket and grapple can be coupled with a quick coupler, a tilt-rotator or anything else to add more functionality and efficiency to your existing bucket or grapple. If you're not sure what is right for you, visit our Solution Center and let us know what problems you are confronting on your project, and we will offer you the right solution!

Don't forget about our financing options whether you are looking for purchase financing or leasing equipment, we can take care of you!

Due to a well-staffed production line and expert management, we offer reasonable lead times. Among the many buckets we carry, we offer:

- **Digging (Tooth) Buckets**
- **Cleanout (Ditching) Buckets**
- **Grading Buckets**
- **V-Buckets (Trapezoid)**
- **Cribbing Buckets (trenching)**
- **Skeleton Buckets**
- **Power-Tilt Buckets (hydraulic tilt)**

*Contractors and dealers should also keep in mind that excavator attachments often take longer to prepare and deliver than skid steer attachments. While a skid steer offers a universal quick-attach plate, every make and model of excavator has a different configuration at the end of the stick or boom. Therefore, it takes time to prepare a hook up on an excavator attachment that will fit your configuration just right. We will usually ask you what type of quick coupler your excavator may have. If you have a pin-grabber instead of a quick-coupler on your excavator, we will ask you for measurements of your pin diameters, distance between your pins and a couple of other measurements. **So, please make sure to allow for extra time when ordering an excavator attachment!***

We have the attachments to get the job done right!

PREMIUM EXCAVATOR BUCKETS

Our premium Excavator and Backhoe buckets are specifically engineered to handle clay, gravel, compacted soil, and loose rock applications.

- Buckets available in standard duty, heavy duty and extreme duty versions
- Available for ALL makes and models of backhoes and excavators
- Standard Widths from 9" to 72"
- Constructed of wear-resistant steel
- Customized buckets built to your specifications
- Reasonable lead times!
- Made in the U.S.A.!



MANUAL & HYDRAULIC THUMBS



RAKES & GRAPPLES



DITCHING/CLEANOUT & GRADING BUCKETS



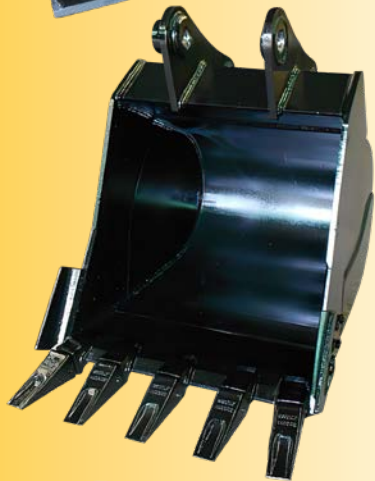
SKELETON BUCKETS



TILT BUCKETS, V-BUCKETS, SCANDI, SHALLOW PROFILE BUCKETS, CRIBBING BUCKETS & OTHER SPECIALTY BUCKETS



Table of Contents



1

Mini Excavator Buckets (2,500 – 20,000 lb. range)

1

Ditching/Cleanout/Grading Bucket

2

Digging/Tooth Buckets aka Standard Excavator Buckets

3

Skeleton Buckets

3

Power-Tilt Buckets

3

Cribbing/Trenching Buckets

4

V-Buckets/Trapezoid

4

Gravedigger/Shallow Profile Buckets

4

Concrete Slab/Pavement Removal Buckets

5

Excavator Buckets (21,000 – 100,000+ lbs.)

5

Ditching/Cleanout/Grading Buckets

6

Standard Duty Digging/Tooth Buckets

7

Heavy-Duty Digging/Tooth Buckets

8

Extreme Duty Digging/Tooth Buckets

9

Skeleton Buckets

10

Power-Tilt Buckets

10

Cribbing/Trenching Buckets

10

V-Buckets/Trapezoid

10

Gravedigger/Shallow Profile Buckets

10

Concrete Slab/Pavement Removal Buckets

11

Compaction Wheels

12

Thumbs

12

Manual/Mechanical Thumbs

12

Stick-Mount Hydraulic Thumbs

13

Main-Pin Mount Hydraulic Thumbs (Pin on?)

13

Progressive Link/Full Radius Hydraulic Thumbs

14

Rakes

15

Rippers & Stump Splitters

15

Ripper Teeth

16

Double-Shaft Tree Stumper

16

Double-Shaft Tree Stumper with Rake

17

Sharktooth Stump Splitter

18

Grapples

18

3 over 2 Tine Grapples

18

4 over 3 tine Grapples

19

US-Made Manual/Mechanical Couplers

19

Mini Excavator Manual Couplers (2,000 to 18,000 lbs.)

19

Excavator Manual Couplers (18,000 – 85,000 lbs.)

20

Harford Attachment Excavator Couplers (Made in the UK)

20

Pro-lok Manual Couplers (2,200 – 17,600 lbs.)

20

Safelock Manual Couplers (2,200 – 17,600 lbs.)

21

Uni-lok Hydraulic Couplers (2,200 – 31,000 lbs.)

21

Uni-lok Hydraulic Tilt Couplers (2,200 – 17,600 lbs.)

Excavator Buckets: 2,500–20,000 LB Range

Ditching/Cleaning Buckets

Tough enough for the most demanding ditching and grading jobs. With built-in stiffeners for strength and durability. Removable blade option.

Ditch Cleaning Buckets come smooth edge with with an additional bolt on edge. We can add drain holes and gussets.

BUCKETS DO NOT COME WITH PINS. IF PINS ARE NEEDED, GET A CUSTOM QUOTE

SKU	DESCRIPTION	WEIGHT CLASS	WEIGHT	OTHER INFO
DCB0424	24" Ditch Cleaning Bucket	2500lbs-5,999	255	C/W BOE
DCB0430	30" Ditch Cleaning Bucket	2500lbs-5,999	295	C/W BOE
DCB0436	36" Ditch Cleaning Bucket	2500lbs-5,999	335	C/W BOE
DCB0442	42" Ditch Cleaning Bucket	2500lbs-5,999	390	C/W BOE
DCB0630	30" Ditch Cleaning Bucket	6K-9,999	295	C/W BOE
DCB0642	42" Ditch Cleaning Bucket	6K-9,999	390	C/W BOE
DCB0648	48" Ditch Cleaning Bucket	6K-9,999	440	C/W BOE
DCB1030	30" Ditch Cleaning Bucket	10K-11,999	305	C/W BOE
DCB1036	36" Ditch Cleaning Bucket	10K-11,999	345	C/W BOE
DCB1042	42" Ditch Cleaning Bucket	10K-11,999	400	C/W BOE
DCB1048	48" Ditch Cleaning Bucket	10K-11,999	450	C/W BOE
DCB1242	42" Ditch Cleaning Bucket	12K-13,999	490	C/W BOE
DCB1248	48" Ditch Cleaning Bucket	12K-13,999	540	C/W BOE
DCB1254	54" Ditch Cleaning Bucket	12K-13,999	590	C/W BOE
DCB1260	60" Ditch Cleaning Bucket	12K-13,999	640	C/W BOE
DCB1636	36" Ditch Cleaning Bucket	14K-20K	450	C/W BOE
DCB1642	42" Ditch Cleaning Bucket	14K-20K	500	C/W BOE
DCB1648	48" Ditch Cleaning Bucket	14K-20K	550	C/W BOE
DCB1654	54" Ditch Cleaning Bucket	14K-20K	600	C/W BOE
DCB1660	60" Ditch Cleaning Bucket	14K-20K	660	C/W BOE

SKU	DESCRIPTION	WEIGHT CLASS	WEIGHT	OTHER INFO
DCB0636	36" Ditch Cleaning Bucket	6K-9,999	335	C/W BOE

SKU	DESCRIPTION	WEIGHT CLASS	WEIGHT	OTHER INFO
DCB1236	36" Ditch Cleaning Bucket	12K-13,999	440	C/W BOE



DCB0630



DCB1236

Excavator Buckets: 2,500–20,000 LB Range

Digging/Tooth Buckets
(AKA Standard Excavator Buckets)



SKU	DESCRIPTION	WEIGHT CLASS	WEIGHT	OTHER INFO
EB0410	10" Bucket with teeth	2500lbs-5,999	170	3 teeth
EB0412	12" Bucket with teeth	2500lbs-5,999	185	3 teeth
EB0416	16" Bucket with teeth	2500lbs-5,999	210	4 teeth
EB0418	18" Bucket with teeth	2500lbs-5,999	220	4 teeth
EB0420	20" Bucket with teeth	2500lbs-5,999	245	5 teeth
EB0424	24" Bucket with teeth	2500lbs-5,999	255	5 teeth
EB0430	30" Bucket with teeth	2500lbs-5,999	290	5 teeth
EB0610	10" Bucket with teeth	6K-9,999	175	3 teeth
EB0612	12" Bucket with teeth	6K-9,999	190	3 teeth
EB0616	16" Bucket with teeth	6K-9,999	215	4 teeth
EB0618	18" Bucket with teeth	6K-9,999	225	4 teeth
EB0620	20" Bucket with teeth	6K-9,999	250	5 teeth
EB0624	24" Bucket with teeth	6K-9,999	260	5 teeth
EB0630	30" Bucket with teeth	6K-9,999	295	5 teeth
EB0636	36" Bucket with teeth	6K-9,999	350	6 teeth
EB0642	42" Bucket with teeth	6K-9,999	400	6 teeth
EB0648	48" Bucket with teeth	6K-9,999	440	6 teeth
EB1012	12" Bucket with teeth	10K-11,999	350	3 teeth
EB1016	16" Bucket with teeth	10K-11,999	380	4 teeth
EB1018	18" Bucket with teeth	10K-11,999	400	4 teeth
EB1020	20" Bucket with teeth	10K-11,999	440	4 teeth
EB1024	24" Bucket with teeth	10K-11,999	465	5 teeth
EB1030	30" Bucket with teeth	10K-11,999	515	5 teeth
EB1036	36" Bucket with teeth	10K-11,999	565	6 teeth
EB1042	42" Bucket with teeth	10K-11,999	605	6 teeth
EB1048	48" Bucket with teeth	10K-11,999	650	6 teeth
EB1060	60" Bucket with teeth	10K-11,999	705	6 teeth
EB1212	12" Bucket with teeth	12K-13,999	355	3 teeth
EB1216	16" Bucket with teeth	12K-13,999	385	4 teeth
EB1218	18" Bucket with teeth	12K-13,999	405	4 teeth
EB1220	20" Bucket with teeth	12K-13,999	460	4 teeth
EB1224	24" Bucket with teeth	12K-13,999	470	5 teeth
EB1230	30" Bucket with teeth	12K-13,999	520	5 teeth
EB1236	36" Bucket with teeth	12K-13,999	570	6 teeth
EB1242	42" Bucket with teeth	12K-13,999	610	6 teeth
EB1248	48" Bucket with teeth	12K-13,999	660	6 teeth
EB1260	60" Bucket with teeth	12K-13,999	710	6 teeth
EB1612	12" Bucket with teeth	14K-20K	475	3 teeth
EB1616	16" Bucket with teeth	14K-20K	510	4 teeth
EB1618	18" Bucket with teeth	14K-20K	540	4 teeth
EB1620	20" Bucket with teeth	14K-20K	590	4 teeth
EB1624	24" Bucket with teeth	14K-20K	615	5 teeth
EB1630	30" Bucket with teeth	14K-20K	715	5 teeth
EB1636	36" Bucket with teeth	14K-20K	755	6 teeth
EB1642	42" Bucket with teeth	14K-20K	805	6 teeth
EB1648	48" Bucket with teeth	14K-20K	850	6 teeth
EB1660	60" Bucket with teeth	14K-20K	900	6 teeth

Excavator Buckets: 2,500–20,000 LB Range

Skeleton Buckets

SKU	DESCRIPTION	WEIGHT CLASS	WEIGHT
SKB0624	24" Skeleton Bucket	6K-9,999	265
SKB0636	36" Skeleton Bucket	6K-9,999	390
SKB0648	48" Skeleton Bucket	6K-9,999	460
SKB1036	36" Skeleton Bucket	10K-11,999	480
SKB1042	42" Skeleton Bucket	10K-11,999	540
SKB1048	48" Skeleton Bucket	10K-11,999	580
SKB1236	36" Skeleton Bucket	12K-13,999	520
SKB1242	42" Skeleton Bucket	12K-13,999	560
SKB1248	48" Skeleton Bucket	12K-13,999	600
SKB1636	36" Skeleton Bucket	14K-20K	780
SKB1642	42" Skeleton Bucket	14K-20K	800
SKB1648	48" Skeleton Bucket	14K-20K	820
SKB1660	60" Skeleton Bucket	14K-20K	840

Skeleton Buckets are *WITHOUT* teeth. Get a quote for teeth.

Power Tilt Buckets

Power Tilt Buckets allow the bucket to rotate 90 degrees in each direction. These buckets come in many widths for most size machines! Prices include a bolt on edge!

This is a low cost alternative to a tilt coupler for those who just need a tilting bucket for one off jobs.



Cribbing/Trenching Buckets

Cribbing Buckets are used for railroad maintenance like removing railroad ties and also for some minor trenching. These buckets come in 6", 8" and 10" options for mini excavators and come with teeth.

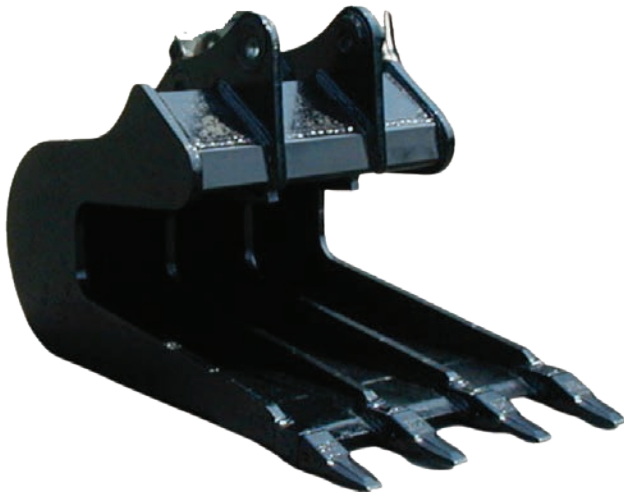




V-Buckets/Trapezoid

Trapezoid Buckets are a must have for anybody doing ditching work, they make easy work out of ditch shaping, and reduces backfill helping reduce your job costs.

These are completely customized! We need to know the top width, bottom width and height/slope that is needed for the bucket. These buckets can also come smooth edge, bolt on edge or with teeth!



Concrete Slab/Pavement Removal Buckets

Pavement Removal Buckets are great for removal and handling of pavement and cement slabs. The unique design of this product makes it easy to wedge under a slab of material to pry it up away from the ground in one or more pieces.

Comes in a variety of widths and capacities for many machine sizes!



Shallow Profile Buckets

Shallow profile buckets are for grading, gradedigging, sloping and other finish work. Their shallow depth and compact size make working in confined areas easier.

Ditching Buckets

Tough enough for the most demanding ditching and grading jobs. With built-in stiffeners for strength and durability. Removable blade option.

Ditch Cleaning Buckets come smooth edge with with an additional bolt on edge. We can add drain holes and gussets.

BUCKETS DO NOT COME WITH PINS. IF PINS ARE NEEDED, GET A CUSTOM QUOTE

SKU	DESCRIPTION	WEIGHT CLASS	WEIGHT	OTHER INFO
DCB5036	36" Ditch Cleaning Bucket	24K-45K	850	C/W BOE
DCB5042	42" Ditch Cleaning Bucket	24K-45K	1035	C/W BOE
DCB5048	48" Ditch Cleaning Bucket	24K-45K	1235	C/W BOE
DCB5054	54" Ditch Cleaning Bucket	24K-45K	1350	C/W BOE
DCB5060	60" Ditch Cleaning Bucket	24K-45K	1435	C/W BOE
DCB5072	72" Ditch Cleaning Bucket	24K-45K	1600	C/W BOE
DCB10048	36" Ditch Cleaning Bucket	45K-80k	1430	C/W BOE
DCB10054	42" Ditch Cleaning Bucket	45K-80k	1650	C/W BOE
DCB10060	48" Ditch Cleaning Bucket	45K-80k	1735	C/W BOE
DCB10066	54" Ditch Cleaning Bucket	45K-80k	1790	C/W BOE
DCB10072	60" Ditch Cleaning Bucket	45K-80k	1840	C/W BOE
DCB10148	36" Ditch Cleaning Bucket	80k-100k		C/W BOE
DCB10154	42" Ditch Cleaning Bucket	80k-100k		C/W BOE
DCB10160	48" Ditch Cleaning Bucket	80k-100k		C/W BOE
DCB10166	54" Ditch Cleaning Bucket	80k-100k		C/W BOE
DCB10172	60" Ditch Cleaning Bucket	80k-100k		C/W BOE
DCB10184	66" Ditch Cleaning Bucket	80k-100k		C/W BOE



Excavator Buckets: 21,000–100,000+ LBS

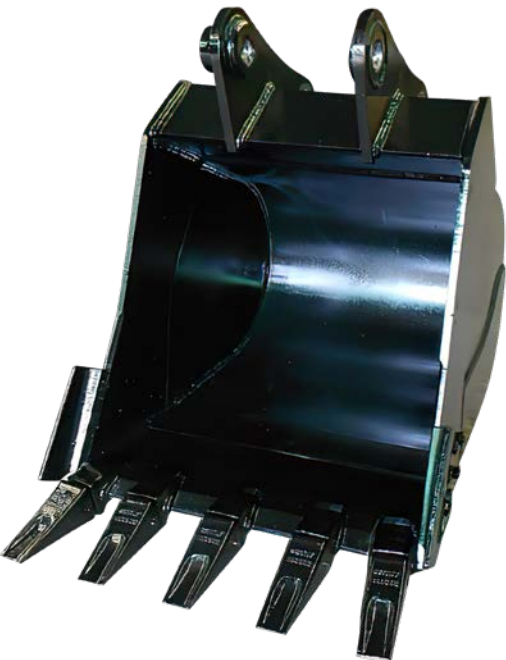
Standard Duty
Digging/Tooth
Buckets



SKU	DESCRIPTION	WEIGHT CLASS	WEIGHT	OTHER INFO
EB2418	18" Bucket with teeth	24K-32,999	825	3 teeth
EB2424	20" Bucket with teeth	24K-32,999	1000	4 teeth
EB2430	24" Bucket with teeth	24K-32,999	1110	4 teeth
EB2436	30" Bucket with teeth	24K-32,999	1250	5 teeth
EB2442	36" Bucket with teeth	24K-32,999	1350	5 teeth
EB2448	48" Bucket with teeth	24K-32,999	1500	6 teeth
EB2454	54" Bucket with teeth	24K-32,999	1700	6 teeth
EB2460	60" Bucket with teeth	24K-32,999	1800	6 teeth
EB3318	18" Bucket with teeth	33K-39,999	1150	3 teeth
EB3320	20" Bucket with teeth	33K-39,999	1190	3 teeth
EB3324	24" Bucket with teeth	33K-39,999	1350	4 teeth
EB3330	30" Bucket with teeth	33K-39,999	1450	4 teeth
EB3336	36" Bucket with teeth	33K-39,999	1550	5 teeth
EB3342	48" Bucket with teeth	33K-39,999	1750	5 teeth
EB3348	54" Bucket with teeth	33K-39,999	1850	6 teeth
EB3354	60" Bucket with teeth	33K-39,999	2000	6 teeth
EB3360	72" Bucket with teeth	33K-39,999	2250	6 teeth
EB4018	18" Bucket with teeth	40K-44,999	1450	3 teeth
EB4020	20" Bucket with teeth	40K-44,999	1500	3 teeth
EB4024	24" Bucket with teeth	40K-44,999	1675	4 teeth
EB4030	30" Bucket with teeth	40K-44,999	1875	4 teeth
EB4036	36" Bucket with teeth	40K-44,999	2075	5 teeth
EB4042	42" Bucket with teeth	40K-44,999	2275	5 teeth
EB4048	48" Bucket with teeth	40K-44,999	2500	6 teeth
EB4054	54" Bucket with teeth	40K-44,999	2550	6 teeth
EB4060	60" Bucket with teeth	40K-44,999	2750	6 teeth
EB4520	20" Bucket with teeth	45K-59,999	1700	3 teeth
EB4524	24" Bucket with teeth	45K-59,999	1800	3 teeth
EB4530	30" Bucket with teeth	45K-59,999	2100	4 teeth
EB4536	36" Bucket with teeth	45K-59,999	2350	4 teeth
EB4542	42" Bucket with teeth	45K-59,999	2550	5 teeth
EB4548	48" Bucket with teeth	45K-59,999	2800	5 teeth
EB4554	54" Bucket with teeth	45K-59,999	2950	6 teeth
EB4560	60" Bucket with teeth	45K-59,999	3150	6 teeth
EB4572	72" Bucket with teeth	45K-59,999	3400	6 teeth
EB6524	24" Bucket with teeth	60K-80K	2350	3 teeth
EB6530	30" Bucket with teeth	60K-80K	2550	3 teeth
EB6536	36" Bucket with teeth	60K-80K	2750	4 teeth
EB6542	42" Bucket with teeth	60K-80K	3000	4 teeth
EB6548	48" Bucket with teeth	60K-80K	3300	5 teeth
EB6554	54" Bucket with teeth	60K-80K	3500	5 teeth
EB6560	60" Bucket with teeth	60K-80K	3650	6 teeth
EB6566	66" Bucket with teeth	60K-80K	3800	6 teeth
EB6572	72" Bucket with teeth	60K-80K	4000	6 teeth
EB8024	24" Bucket with teeth	80k-100k	3025	3 teeth
EB8036	36" Bucket with teeth	80k-100k	3265	4 teeth
EB8042	42" Bucket with teeth	80k-100k	3540	4 teeth
EB8048	48" Bucket with teeth	80k-100k	3690	5 teeth
EB8054	54" Bucket with teeth	80k-100k	3840	5 teeth
EB8060	60" Bucket with teeth	80k-100k	3965	6 teeth
EB8066	66" Bucket with teeth	80k-100k	4340	6 teeth
EB8072	72" Bucket with teeth	80k-100k	4735	6 teeth
EB1248	48" Bucket with teeth	12K-13,999	660	6 teeth

Excavator Buckets: 21,000–100,000+ LBS

Heavy Duty
Digging/Tooth
Buckets



SKU	DESCRIPTION	WEIGHT CLASS	WEIGHT	OTHER INFO
HDEB2418	18" Bucket with teeth	24K-32,999	925	3 teeth
HDEB2424	20" Bucket with teeth	24K-32,999	1100	4 teeth
HDEB2430	24" Bucket with teeth	24K-32,999	1215	4 teeth
HDEB2436	30" Bucket with teeth	24K-32,999	1350	5 teeth
HDEB2442	36" Bucket with teeth	24K-32,999	1450	5 teeth
HDEB2448	48" Bucket with teeth	24K-32,999	1600	6 teeth
HDEB2454	54" Bucket with teeth	24K-32,999	1800	6 teeth
HDEB2460	60" Bucket with teeth	24K-32,999	1900	6 teeth
HDEB3318	18" Bucket with teeth	33K-39,999	1275	3 teeth
HDEB3320	20" Bucket with teeth	33K-39,999	1315	3 teeth
HDEB3324	24" Bucket with teeth	33K-39,999	1475	4 teeth
HDEB3330	30" Bucket with teeth	33K-39,999	1575	4 teeth
HDEB3336	36" Bucket with teeth	33K-39,999	1675	5 teeth
HDEB3342	48" Bucket with teeth	33K-39,999	1875	5 teeth
HDEB3348	54" Bucket with teeth	33K-39,999	1975	6 teeth
HDEB3354	60" Bucket with teeth	33K-39,999	2125	6 teeth
HDEB3360	72" Bucket with teeth	33K-39,999	2375	6 teeth
HDEB4018	18" Bucket with teeth	40K-44,999	1600	3 teeth
HDEB4020	20" Bucket with teeth	40K-44,999	1650	3 teeth
HDEB4024	24" Bucket with teeth	40K-44,999	1825	4 teeth
HDEB4030	30" Bucket with teeth	40K-44,999	2025	4 teeth
HDEB4036	36" Bucket with teeth	40K-44,999	2225	5 teeth
HDEB4042	42" Bucket with teeth	40K-44,999	2425	5 teeth
HDEB4048	48" Bucket with teeth	40K-44,999	1650	6 teeth
HDEB4054	54" Bucket with teeth	40K-44,999	1700	6 teeth
HDEB4060	60" Bucket with teeth	40K-44,999	2900	6 teeth
HDEB4520	20" Bucket with teeth	45K-59,999	1875	3 teeth
HDEB4524	24" Bucket with teeth	45K-59,999	1975	3 teeth
HDEB4530	30" Bucket with teeth	45K-59,999	2275	4 teeth
HDEB4536	36" Bucket with teeth	45K-59,999	2525	4 teeth
HDEB4542	42" Bucket with teeth	45K-59,999	2725	5 teeth
HDEB4548	48" Bucket with teeth	45K-59,999	2975	5 teeth
HDEB4554	54" Bucket with teeth	45K-59,999	3125	6 teeth
HDEB4560	60" Bucket with teeth	45K-59,999	3325	6 teeth
HDEB4572	72" Bucket with teeth	45K-59,999	3575	6 teeth
HDEB6524	24" Bucket with teeth	60K-80K	2550	3 teeth
HDEB6530	30" Bucket with teeth	60K-80K	2750	3 teeth
HDEB6536	36" Bucket with teeth	60K-80K	2950	4 teeth
HDEB6542	42" Bucket with teeth	60K-80K	3200	4 teeth
HDEB6548	48" Bucket with teeth	60K-80K	3500	5 teeth
HDEB6554	54" Bucket with teeth	60K-80K	3700	5 teeth
HDEB6560	60" Bucket with teeth	60K-80K	3850	6 teeth
HDEB6566	66" Bucket with teeth	60K-80K	4000	6 teeth
HDEB6572	72" Bucket with teeth	60K-80K	4200	6 teeth
HDEB8036	24" Bucket with teeth	80k-100k	3250	3 teeth
HDEB8042	36" Bucket with teeth	80k-100k	3515	4 teeth
HDEB8048	42" Bucket with teeth	80k-100k	3765	4 teeth
HDEB8054	48" Bucket with teeth	80k-100k	3915	5 teeth
HDEB8060	54" Bucket with teeth	80k-100k	4065	5 teeth
HDEB8066	60" Bucket with teeth	80k-100k	4190	6 teeth
HDEB8072	66" Bucket with teeth	80k-100k	4565	6 teeth

Extreme Duty Digging/Tooth Buckets



SKU	DESCRIPTION	WEIGHT CLASS	WEIGHT	OTHER INFO
EDEB2418	18" Bucket with teeth	24K-32,999	975	3 teeth
EDEB2424	20" Bucket with teeth	24K-32,999	1150	4 teeth
EDEB2430	24" Bucket with teeth	24K-32,999	1265	4 teeth
EDEB2436	30" Bucket with teeth	24K-32,999	1400	5 teeth
EDEB2442	36" Bucket with teeth	24K-32,999	1500	5 teeth
EDEB2448	48" Bucket with teeth	24K-32,999	1650	6 teeth
EDEB2454	54" Bucket with teeth	24K-32,999	1850	6 teeth
EDEB2460	60" Bucket with teeth	24K-32,999	1950	6 teeth
EDEB3318	18" Bucket with teeth	33K-39,999	1350	3 teeth
EDEB3320	20" Bucket with teeth	33K-39,999	1390	3 teeth
EDEB3324	24" Bucket with teeth	33K-39,999	1550	4 teeth
EDEB3330	30" Bucket with teeth	33K-39,999	1650	4 teeth
EDEB3336	36" Bucket with teeth	33K-39,999	1750	5 teeth
EDEB3342	48" Bucket with teeth	33K-39,999	1950	5 teeth
EDEB3348	54" Bucket with teeth	33K-39,999	2050	6 teeth
EDEB3354	60" Bucket with teeth	33K-39,999	2200	6 teeth
EDEB3360	72" Bucket with teeth	33K-39,999	2450	6 teeth
EDEB4018	18" Bucket with teeth	40K-44,999	1700	3 teeth
EDEB4020	20" Bucket with teeth	40K-44,999	1750	3 teeth
EDEB4024	24" Bucket with teeth	40K-44,999	1925	4 teeth
EDEB4030	30" Bucket with teeth	40K-44,999	2125	4 teeth
EDEB4036	36" Bucket with teeth	40K-44,999	2325	5 teeth
EDEB4042	42" Bucket with teeth	40K-44,999	2525	5 teeth
EDEB4048	48" Bucket with teeth	40K-44,999	2750	6 teeth
EDEB4054	54" Bucket with teeth	40K-44,999	2800	6 teeth
EDEB4060	60" Bucket with teeth	40K-44,999	3000	6 teeth
EDEB4520	20" Bucket with teeth	45K-59,999	1975	3 teeth
EDEB4524	24" Bucket with teeth	45K-59,999	2075	3 teeth
EDEB4530	30" Bucket with teeth	45K-59,999	2375	4 teeth
EDEB4536	36" Bucket with teeth	45K-59,999	2625	4 teeth
EDEB4542	42" Bucket with teeth	45K-59,999	2825	5 teeth
EDEB4548	48" Bucket with teeth	45K-59,999	3075	5 teeth
EDEB4554	54" Bucket with teeth	45K-59,999	3225	6 teeth
EDEB4560	60" Bucket with teeth	45K-59,999	3425	6 teeth
EDEB4572	72" Bucket with teeth	45K-59,999	3675	6 teeth
EDEB6524	24" Bucket with teeth	60K-80K	2700	3 teeth
EDEB6530	30" Bucket with teeth	60K-80K	2900	3 teeth
EDEB6536	36" Bucket with teeth	60K-80K	3100	4 teeth
EDEB6542	42" Bucket with teeth	60K-80K	3350	4 teeth
EDEB6548	48" Bucket with teeth	60K-80K	3650	5 teeth
EDEB6554	54" Bucket with teeth	60K-80K	3850	5 teeth
EDEB6560	60" Bucket with teeth	60K-80K	4000	6 teeth
EDEB6566	66" Bucket with teeth	60K-80K	4150	6 teeth
EDEB6572	72" Bucket with teeth	60K-80K	4350	6 teeth
EDEB8036	24" Bucket with teeth	80k-100k	3400	3 teeth
EDEB8042	36" Bucket with teeth	80k-100k	3665	4 teeth
EDEB8048	42" Bucket with teeth	80k-100k	3915	4 teeth
EDEB8054	48" Bucket with teeth	80k-100k	4065	5 teeth
EDEB8060	54" Bucket with teeth	80k-100k	4190	5 teeth
EDEB8066	60" Bucket with teeth	80k-100k	4565	6 teeth
EDEB8072	66" Bucket with teeth	80k-100k	4715	6 teeth

Skeleton Buckets

SKU	DESCRIPTION	WEIGHT CLASS	WEIGHT
SKB2436	36" Skeleton Bucket	24K-32,999	1280
SKB2442	42" Skeleton Bucket	24K-32,999	1380
SKB2448	48" Skeleton Bucket	24K-32,999	1530
SKB2460	60" Skeleton Bucket	24K-32,999	1840
SKB3336	36" Skeleton Bucket	33K-39,999	1580
SKB3342	42" Skeleton Bucket	33K-39,999	1780
SKB3348	48" Skeleton Bucket	33K-39,999	1880
SKB3360	60" Skeleton Bucket	33K-39,999	2280
SKB4036	36" Skeleton Bucket	40K-44,999	105
SKB4042	42" Skeleton Bucket	40K-44,999	2305
SKB4048	48" Skeleton Bucket	40K-44,999	2530
SKB4060	60" Skeleton Bucket	40K-44,999	2780
SKB4536	36" Skeleton Bucket	45K-59,999	2380
SKB4542	42" Skeleton Bucket	45K-59,999	2580
SKB4548	48" Skeleton Bucket	45K-59,999	2830
SKB4560	60" Skeleton Bucket	45K-59,999	3180
SKB6548	48" Skeleton Bucket	60K-80K	3330
SKB6560	60" Skeleton Bucket	60K-80K	3680
SKB6572	72" Skeleton Bucket	60K-80K	4030

Skeleton Buckets are WITHOUT teeth. Get a quote for teeth.



Excavator Buckets: 21,000–100,000+ LBS



Power Tilt Buckets

Power Tilt Buckets allow the bucket to rotate 90 degrees in each direction. These buckets come in many widths for most size machines! Prices include a bolt on edge!

This is a low cost alternative to a tilt coupler for those who just need a tilting bucket for one off jobs.



Cribbing/Trenching Buckets

Cribbing Buckets are used for railroad maintenance like removing railroad ties and also for some minor trenching. These buckets come in 6", 8" and 10" options for mini excavators and come with teeth.



V Buckets/Trapezoid Buckets

Trapezoid Buckets are a must have for anybody doing ditching work, they make easy work out of ditch shaping, and reduces backfill helping reduce your job costs.

These are completely customized! We need to know the top width, bottom width and height/slope that is needed for the bucket. These buckets can also come smooth edge, bolt on edge or with teeth!



Concrete Slab/Pavement Removal Buckets

Pavement Removal Buckets are great for removal and handling of pavement and cement slabs. The unique design of this product makes it easy to wedge under a slab of material to pry it up away from the ground in one or more pieces.

Comes in a variety of widths and capacities for many machine sizes!



Shallow Profile Buckets

Shallow profile buckets are for grading, gradedigging, sloping and other finish work. Their shallow depth and compact size make working in confined areas easier.

Compaction Wheels

Compaction Wheels help compaction without soil bridging effectively. These products work from the bottom up, breaking soil and are great for penetrating and compacting soil!

These compaction wheels come in 24", 36" and 48" and are available for custom sizes as well! They come with separate wheels with pads welded on each wheel, held together by an axle and fit to our customer's machine.

SKU	DESCRIPTION	WEIGHT CLASS	WEIGHT	OTHER INFO
CPW 1-18	Class 1 18" Compaction Wheel	10k-16,999	615	23" Wheels
CPW 1-24	Class 1 24" Compaction Wheel	10k-16,999	715	23" Wheels
CPW 2-18	Class 2 18" Compaction Wheel	17k-27,499	1500	26 1/2" Wheels
CPW 2-24	Class 2 24" Compaction Wheel	17k-27,499	1900	26 1/2" Wheels
CPW 2-36	Class 2 36" Compaction Wheel	17k-27,499	2400	27 1/2" Wheels
CPW 3-24	Class 3 24" Compaction Wheel	27.5k-49,999	2350	31 5/16" Wheels
CPW 3-36	Class 3 36" Compaction Wheel	27.5k-49,999	2550	31 5/16" Wheels
CPW4-24	Class 4 24" Compaction Wheel	50k-74,999	2450	35 3/4" Wheels
CPW 4-36	Class 4 36" Compaction Wheel	50k-74,999	2650	35 3/4" Wheels
CPW 5-24	Class 5 24" Compaction Wheel	75k-110k	2800	42" Wheels
CPW 5-36	Class 5 36" Compaction Wheel	75k-110k	2900	42" Wheels





Manual/Mechanical Thumbs

Manual thumbs aka Mechanical Thumbs are welded on to your machine. This is a rigid thumb that does not move with use of hydraulics. There are no special pins or hydraulics required for this thumb.

This thumb pushes against whatever item you are picking up and then close the bucket. The manual thumb you have to push the thumb against the item to be picked up and then close the bucket.

This is your low cost solution when in need of a thumb.

SKU	DESCRIPTION	WEIGHT CLASS	WEIGHT	OTHER INFO
MT 824	8 x 24 Manual Thumb	2500lbs-10K	140	2 Fingers
MT 830	8 x 30 Manual Thumb	6K-12K	170	2 Fingers
MT 1236	12 x 36 Manual Thumb	10K-20K	290	2 Fingers
MT 1240	12 x 40 Manual Thumb	10K-20K	300	2 Fingers
MT 1246	12 x 46 Manual Thumb	14K-20K	360	2 Fingers
MT 1850	18 x 50 Manual Thumb	24K-40K	660	3 fingers
MT 1856	18 x 56 Manual Thumb	24K-40K	675	3 fingers
MT 2458	24 x 58 Manual Thumb	40K-45K	985	4 fingers
MT 3062	30 x 62 Manual Thumb	40K-60K	1420	4 fingers

Stick-Mount Hydraulic Thumbs

Any size bigger or smaller available, get a custom quote.



SKU	DESCRIPTION	WEIGHT CLASS	WEIGHT	OTHER INFO
HYD 824	8 x 24 Hydraulic Thumb	2500lbs-10K	160	2 Fingers
HYD 830	8 x 30 Hydraulic Thumb	6K-12K	200	2 Fingers
HYD1035	10 x 35 Hydraulic Thumb	10K-20K	250	2 Fingers
HYD 1236	12 x 36 Hydraulic Thumb	10K-20K	290	2 Fingers
HYD 1240	12 x 40 Hydraulic Thumb	10K-20K	310	2 Fingers
HYD 1246	12 x 46 Hydraulic Thumb	14K-20K	375	2 Fingers
HYD 1850	18 x 50 Hydraulic Thumb	24K-40K	635	3 fingers
HYD 1856	18 x 56 Hydraulic Thumb	24K-40K	645	3 finger
HYD 2458	24 x 58 Hydraulic Thumb	40K-45K	1020	4 fingers
HYD 3062	30 x 62 Hydraulic Thumb	40K-60K	1485	4 fingers

Main-Pin Mount Hydraulic Thumbs (AKA Pin-On)

Hydraulic thumbs weld on to the stick of the machine. This is a very versatile product that works with a hydraulic cylinder and connects to the hydraulic hoses on the machine. The hydraulic thumb makes it easy to pick up bulky materials with precision.

There is a better range of motion when comparing to a manual thumb. This thumb is manufacturing to specifically fit your bucket so that you are able to close the thumb around the bucket at multiple angles.



SKU	DESCRIPTION	WEIGHT CLASS	WEIGHT	OTHER INFO
POHT824	8 x 24 Pin On Hydraulic Thumb	2500lbs-10K	160	2 Fingers
POHT830	8 x 30 Pin On Hydraulic Thumb	6K-12K	200	2 Fingers
POHT1035	10 x 35 Pin On Hydraulic Thumb	10K-20K	250	2 Fingers
POHT1236	12 x 36 Pin On Hydraulic Thumb	10K-20K	290	2 Fingers
POHT1240	12 x 40 Pin On Hydraulic Thumb	10K-20K	310	2 Fingers
POHT1246	12 x 46 Pin On Hydraulic Thumb	14K-20K	375	2 Fingers
POHT1850	18 x 50 Pin On Hydraulic Thumb	24K-40K	635	3 fingers
POHT1856	18 x 56 Pin On Hydraulic Thumb	24K-40K	645	3 fingers
POHT2458	24 x 58 Pin On Hydraulic Thumb	40K-45K	1020	4 fingers
POHT3062	30 x 62 Pin On Hydraulic Thumb	40K-60K	1485	4 fingers
POHT3072	30 x 72 Pin on Hydraulic Thumb	65K-80K	2250	4 fingers

Progressive Link/Full Radius Hydraulic Thumbs (AKA Pro-Link)

MODEL	MACHINE WEIGHT (LBS.)	LENGTH	WIDTH	TINE THICKNESS	APPROX. WEIGHT (LBS.)
SET - .75	8,000 - 10,000	32"	11"	N/A	250
SET - 1H	11,000 - 18,000	40"	12"	N/A	325
SET - 1.5H	19,000 - 29,000	48"	18"	1"	800
SET - 2H	30,000 - 39,000	56"	25"	1"	950
SET - 2.5H	40,000 - 45,000	56"	30"	1.25"	1150
SET - 3H	45,000 - 59,000	64"	30"	1.25"	1250
SET - 4H	60,000 - 79,000	73"	36"	1.25"	1450
SET - 5H	80,000 - 110,000	78"	36"	1.25"	1800
SET - 6H	111,000 and up				

Note: Specifications, dimensions & weight are approximate and subject to change without notice

FEATURES

- We supply worksheet to confirm measurements for exact fit
- Easily installed by qualified welders in 2 hours
- Full Rotation
- Folds up tight for storage
- Includes pins, cylinder & factory bushings
- Heavy-Duty Cylinder made in the USA
- Mount to bucket & boom arm or bucket & coupler
- Does not include jump hoses
- Available for any size or model excavator
- Available for any size or model excavator from 33,000 lbs to 79,000 lbs



Rakes

Excavator Rakes are an excellent attachment for land clearing, used to remove unwanted roots, limbs, brush, and other debris.



SKU	DESCRIPTION	WEIGHT CLASS	WEIGHT	OTHER INFO
ER24-1	24" Class 1 Excavator Rake	6K-9,999	250	C/W set of pins
ER36-1	36" Class 1 Excavator Rake	6K-9,999	300	C/W set of pins
ER36-2	36" Class 2 Excavator Rake	10K-15,999	255	C/W set of pins
ER42-2	42" Class 2 Excavator Rake	10K-15,999	285	C/W set of pins
ER36-3	36" Class 3 Excavator Rake	16K-23,999	375	C/W set of pins
ER42-3	42" Class 3 Excavator Rake	16K-23,999	400	C/W set of pins
ER42-4	42" Class 4 Excavator Rake	24K-32,999	690	C/W set of pins
ER48-4	48" Class 4 Excavator Rake	24K-32,999	715	C/W set of pins
ER60-4	60" Class 4 Excavator Rake	24K-32,999	475	C/W set of pins
ER42-5	42" Class 5 Excavator Rake	33K-44,999	890	C/W set of pins
ER48-5	48" Class 5 Excavator Rake	33K-44,999	915	C/W set of pins
ER60-5	60" Class 5 Excavator Rake	33K-44,999	950	C/W set of pins
ER48-6	48" Class 6 Excavator Rake	45K-60K	1015	C/W set of pins
ER60-6	60" Class 6 Excavator Rake	45K-60K	1045	C/W set of pins
ER72-6	72" Class 6 Excavator Rake	45K-60K	1085	C/W set of pins



Rippers & Stump Splitters

Ripper Teeth

Excavator Rippers offers a low cost alternative when it comes to ripping the soil. It makes light work out of otherwise hard ground whether due to cold, rock, or just the terrain.

Ripping the ground prior to digging will reduce wear and tear on your bucket attachments as well as your machine!

We offer various sizes, so please call to get your right size for your project.



SKU	DESCRIPTION	WEIGHT CLASS	WEIGHT
RT 1000 Class 1	Ripper tooth	6K-9,999	200
RT 1000 Class 2	Ripper Tooth Class 2	10K-11,999	210
RT 1000 Class 3	Ripper Tooth Class 3	12K-13,999	220
RT 1500	Ripper tooth	14K-20K	570
RT 2000 Class 1	Ripper Tooth Class 1	24K-33K	1100
RT 2000 Class 2	Ripper Tooth Class 2	33K-40K	1150
RT 2000 Class 3	Ripper Tooth Class 3	40K-45K	1290
RT 2000 Class 4	Ripper Tooth Class 4	45K-50K	1350
RT 3000 Class 1	Ripper tooth Class 1	50K-64,999	1390
RT 3000 Class 2	Ripper tooth Class 2	65K-80K	1450



Double-Shaft Tree Stumper

The Tree stumper is a great product for stump removal and land clearing applications. This product allows for minimal soil disturbance and maximal efficiency!

SKU	DESCRIPTION	WEIGHT CLASS	WEIGHT
TS-1	Tree Stumper	10K-13,999	690
TS-2	Tree Stumper	14K-23,999	790
TS-3	Tree Stumper	24K-39,999	1490
TS-4	Tree Stumper	40K-49,999	1690
TS-5	Tree Stumper	50K-60K	2200



Double-Shaft Tree Stumper with Rake

Excavator Stumper with Rake is an excellent combination where you need a tree stumper and a brush rake at the same time. This product will allow you to do both without having the change your attachments!

SKU	DESCRIPTION	WEIGHT CLASS	WEIGHT
TSR 1	Tree Stumper with Rake	10K-13,999	935
TSR 2	Tree Stumper with Rake	14K-23,999	1015
TSR 3	Tree Stumper with Rake	24K-39,999	2140
TSR 4	Tree Stumper with Rake	40K-49,999	2540
TSR 5	Tree Stumper with Rake	50K-60K	3125



The Solaris Shark Tooth Stump Splitter/Harvester model RST 150

This amazing Solaris Shark Tooth Stump Splitter allows you to saw through stumps in the ground of various sizes, shapes and types, then split it with the wedge shape of the tooth and extract it with a 12-24-ton excavator. Proudly made in the USA with AR 400 steel, the Solaris Shark Tooth Stump Splitter is built like a tank and built to last.

This highly rugged and effective Solaris Shark Tooth Stump Splitter will save you a very significant amount of time and money on your mid-sized excavator for land clearing jobs. Splitting the stump in the ground and harvesting the downsized stump sections with this attachment has many advantages:

- Less wear and tear on your machine
- Less disturbance to the ground when compared to using a bucket
- No need for larger excavators
- Make far fewer trips to haul away whole stumps
- Easy processing and much safer than some traditional means
- Ability to enter sloped and rugged terrain, unlike a dedicated, more expensive stump grinder

Once the stumps are split, use the Solaris Shark Tooth Stump Splitter, together with a thumb, to extract the stump from the ground or load it into a tub grinder or container. With this tool, there is no need for a larger tub grinder. The use of the Solaris Shark Tooth Stump Splitter saves you money and increases profits without having to invest huge sums of money.





3 Over 2 Tine Grapples

The Demolition Grapple is a versatile attachment great for demolition, recycling, excavation and salvage applications.

There is a 3 over 2 option and a 4 over 3 option.

These demolition grapples can be made for mini excavators all the way up to 100,000lb machines!

SKU	DESCRIPTION	WEIGHT CLASS
MGR302	Mini 3 over 2 Grapple	8K-16K

SKU	DESCRIPTION	WEIGHT CLASS
C1-GR302	Class 1	16K-24K
C2-GR302	Class 2	24K - 33K
C3-GR302	Class 3	33K-40K
C4-GR302	Class 4	40K-50K
C5-GR302	Class 5	50K+

4 Over 3 Tine Grapples

SKU	DESCRIPTION	WEIGHT CLASS
C1-GR403	Class 1	16K-24K
C2-GR403	Class 2	24K - 33K
C3-GR403	Class 3	33K-40K
C4-GR403	Class 4	40K-50K
C5-GR403	Class 5	50K+

Mini-Excavator Manual Couplers (2,000 to 18,000 LBS.)

Our Manual Pin Grab Coupler is OEM Compatible, high strength, wear resistant steel used in all wear points, and positive locking hardened steel pins.

Makes changing attachments simple, safe, and much quicker than pin on attachments.

One set of pins supplied with every coupler.

We also have a Dual Sided option!

These are also known as Manual, Mechanical, and Pin-Grabber Couplers

SKU	DESCRIPTION	WEIGHT CLASS	WEIGHT	OTHER INFO
PGC 10	Pin Grab Coupler	0-9,999	120	C/W set of pins
PGC 12	Pin Grab Coupler	10K-11,999	160	C/W set of pins
PGC 18	Pin Grab Coupler	12K-17,999	170	C/W set of pins



Excavator Manual Couplers (18,000 to 85,000 LBS.)

SKU	DESCRIPTION	WEIGHT CLASS	WEIGHT	OTHER INFO
PGC 23	Pin Grab Coupler	18K-23,999	205	C/W set of pins
PGC 29	Pin Grab Coupler	24K-29,999	360	C/W set of pins
PGC 39	Pin Grab Coupler	30K-39,999	625	C/W set of pins
PGC 49	Pin Grab Coupler	40K-49,999	785	C/W set of pins
PGC 59	Pin Grab Coupler	50K-59,999	800	C/W set of pins
PGC 70	Pin Grab Coupler	60-70K	1035	C/W set of pins





Pro-Lok Manual Couplers (2,200–17,600 lbs.)

The Pro-lok® System is a mechanical coupler that is universal and will work with most attachments and buckets. The Pro-Lok couplers are designed for excavators starting at 0.75 to 9 metric tons (1,650 to 20,000 lbs.)

Pro-lok Pro-Lok® is a class leading, safe, mechanical quick coupler with double-locking technology and built-in safety features putting operator safety at the forefront. Simple to attach, easy to operate and low maintenance. This manual quick hitch picks up all your standard buckets and will outperform and outlive any spring-type equivalent many times over.

Key Features:

- Pro-Lok is a Safe, Double-Locking, Sustainable Mechanical hitch, designed for high performance and requiring low regular maintenance.
- The highly visible Safety Indicator and wedge locking design gives Operators total confidence – and there's no safety-pin to lose on site
- Pro-Lok is easy to install and will outlast any spring-type equivalent by many years.
- Automatic Wear Compensation
- Available for all machines 1,650 to 20,000 lbs.
- Mix and match buckets with a hybrid Pro-Lok. A simple solution to a complex problem



See the Pro-Lok
Coupler Animation



Safelock Manual Couplers (2,200–17,600 lbs.)

Safelock Safelock® dedicated coupler is the unbeatable choice for running a mixed fleet of excavators. It is safe, easy to operate, low maintenance, sustainable with a built-in safety indicator to give Operators complete peace of mind that buckets are securely attached.

The full 180 degree movement and class-leading torque combine to produce an outstanding, quality quick hitch made to meet today's challenging applications – perfect for a wide range of tasks.

Key Features:

- Safelock is Simple, Safe and Sustainable; manufactured to our premium quality standard.
- Unbeatable for mixed-fleet Rentals—your buckets stay with your excavator.
- Very low maintenance and no tools or safety pin required.
- Safelock Adaptor Plates enable use of any standard pick-up attachments on your excavator.
- Available for all excavators 2,200 to 17,600 lbs.).
- Available as a Tilt Coupler
- Available for all machines 1,650 to 20,000 lbs.
- Mix and match buckets with a hybrid Pro-Lok. A simple solution to a complex problem



See the Safelock
Operation Animation



Uni-lok Hydraulic Couplers (2,200–31,000 lbs.)

Uni-lok Uni-Lok® is a double-locking hydraulic quick hitch of the highest build quality, with built-in safety features and the result of a lengthy research and design process putting operator safety at the forefront. With **no need to leave the cab to change attachments**, the highly visible safety indicator gives the operator complete peace of mind that the bucket is secure. Tough, durable, easy to fit and operate with a low maintenance program, the Uni-Lok is the preferred choice.

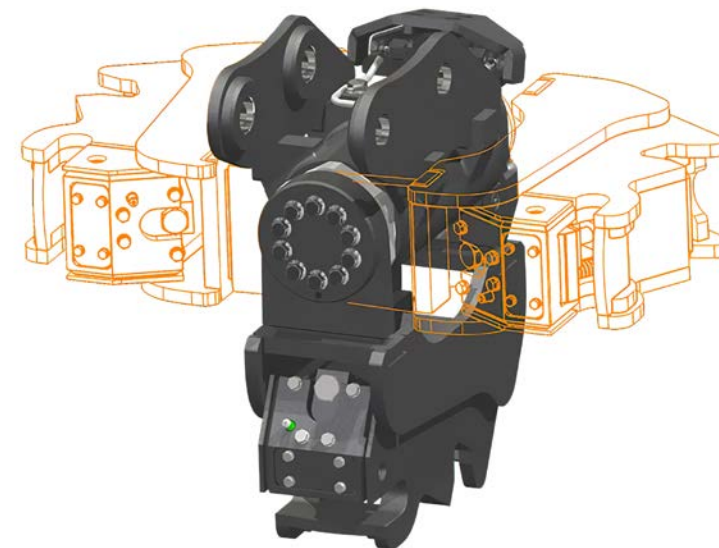
The Uni-Lok® is also available as a **Tilt Coupler**. Combining a full 180 degree movement with class-leading torque gives you a high performance hydraulic hitch made to handle the most demanding jobs.

Key Features:

- Uni-Lok® is a safe, double-locking, fully hydraulic quick hitch, designed with Operator Safety firmly in focus.
- Change your attachments easily from the safety of the cab.
- Uni-Lok® has simple Hands-Free Operation
- Simple to fit, high performance, low regular maintenance.
- Fits any excavator **2,200 – 31,000 lbs.** A Uni-Lok® hybrid hitch enables you to mix and match your buckets



Uni-Lok Hydraulic Quick
Coupler Animation



Uni-lok Hydraulic Tilt Couplers (2,200–17,600 lbs.)

Uni-lok The Tilt Hitch takes machine productivity to the next level. The unbeatable combination of our market leading **Pro-Lok, Uni-Lok** and **Safelock** Couplers with the class-leading Nox tilt rotator, make it the best choice for the toughest of jobs over a wide range of applications. Our Tilt Hitches are available for all machines **2,200 – 17,600 lbs.** The high performance coupled with a low maintenance regime make it an easy product to own. We think you'll wonder how you ever managed without one.

Key Features:

- Class leading torque
- Full 180° tilt movement
- High Performance
- Low Maintenance
- For all machines **2,200 – 17,600 lbs.**



Uni-Lok with Tilt Coupler
and Ditching Bucket video

We offer over 1,400 attachments for a variety of machines. Visit our website for more information.



Contact your local Solaris representative:



Seattle • Bellingham • Nashville • Boston

(888) 754-3609

solarisattachments.com