

SOLARIS - RAMHEAD EXCAVATOR LOG SPLITTER



Quality Attachments, Parts & Customer Service

The Solaris Ramhead Excavator Log Splitter Attachment gives you a variety of options for various excavator weight categories, starting with 6,000 lb. excavators and up to 40,000 lb. machines.

100% made in the USA, this amazing log splitter will allow you to split up to 36" diameter logs and 48" lengths, depending on the size of the excavator and type of wood. Delivered with a standard 4-way splitter head. 2-way and 6-way heads available and are interchangeable. Quick lead times – approximately 14 business days!

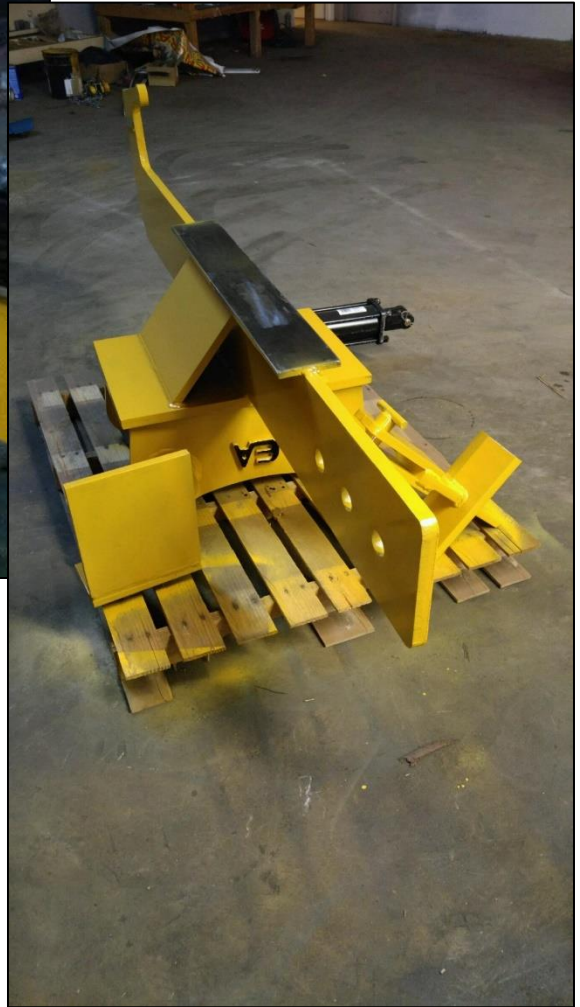


SOLARIS - RAMHEAD EXCAVATOR LOG SPLITTER



Quality Attachments, Parts & Customer Service

MODEL	EXCAVATOR WEIGHT RANGE	MAX LOG DIAMETER	MAX LOG LENGTH	SPLITTER HEADS
RH-1	6,000 - 10,000 lbs.	24"	36"	2, 4 OR 6-WAY
RH-2	10,000 - 14,000 lbs.	36"	42"	2, 4 OR 6-WAY
RH-3	33,000 - 40,000 lbs.	36"	48"	2, 4 OR 6-WAY



- Delivered Standard with a 4-way splitter
- 2-way & 6-way splitter heads available and are interchangeable
- Does not include hoses or couplings
- Uses Standard SAE8 connector
- 2-year limited warranty
- 100% made in the USA with US Steel!



www.solarisattachments.com

Call (888) 754-3609

Email: sales@solarisattachments.com